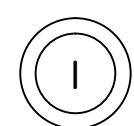
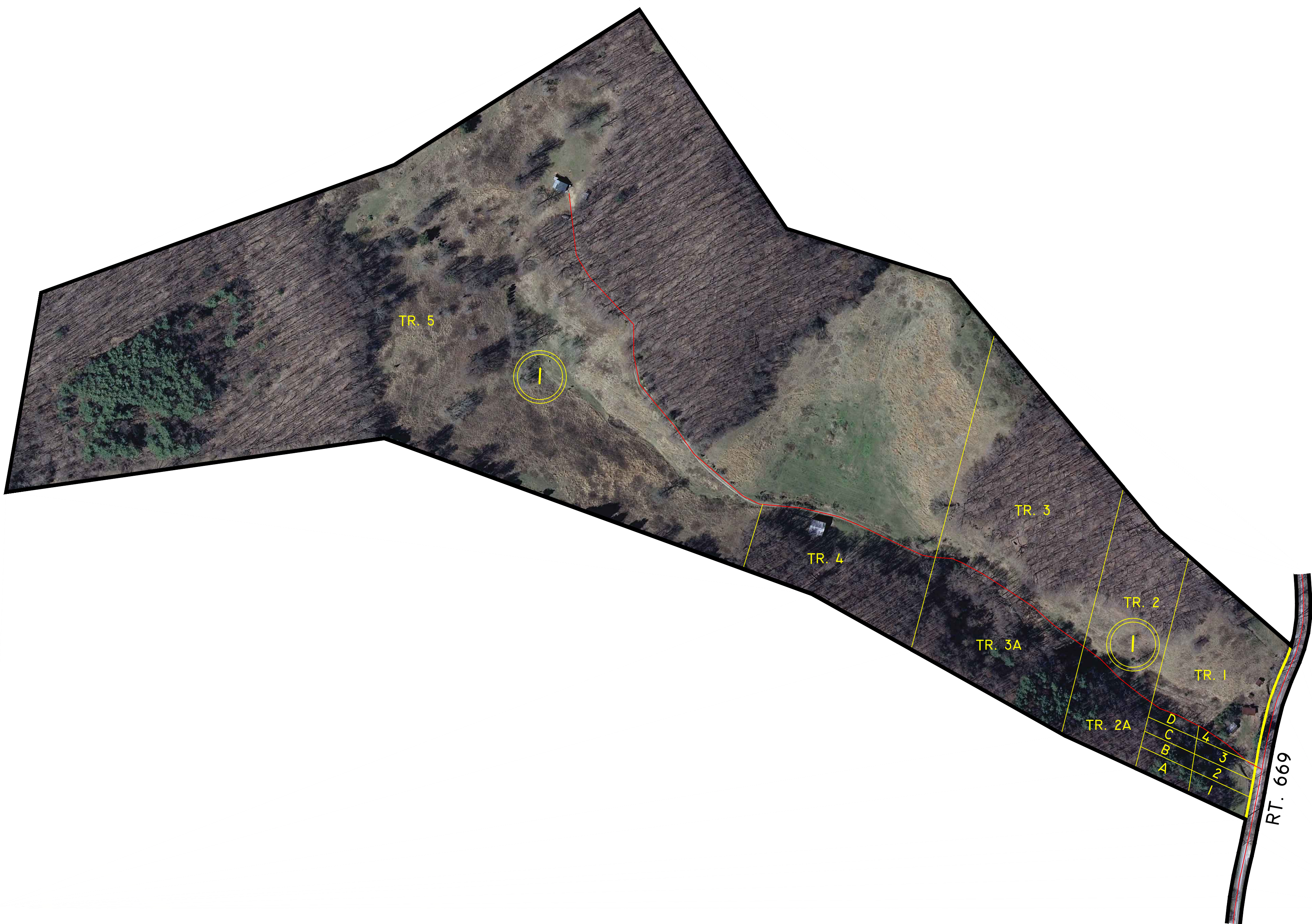
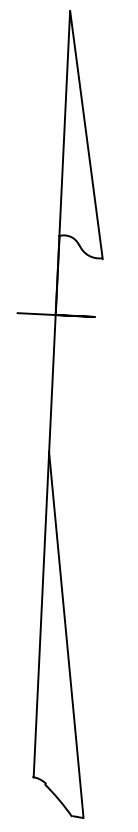
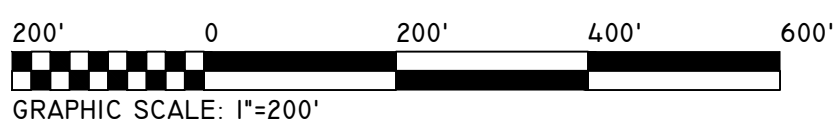


LEE COUNTY, VIRGINIA



PLAT OF EDGAR BACON FARM - DEED BOOK 202, PAGE 489



ROSE HILL

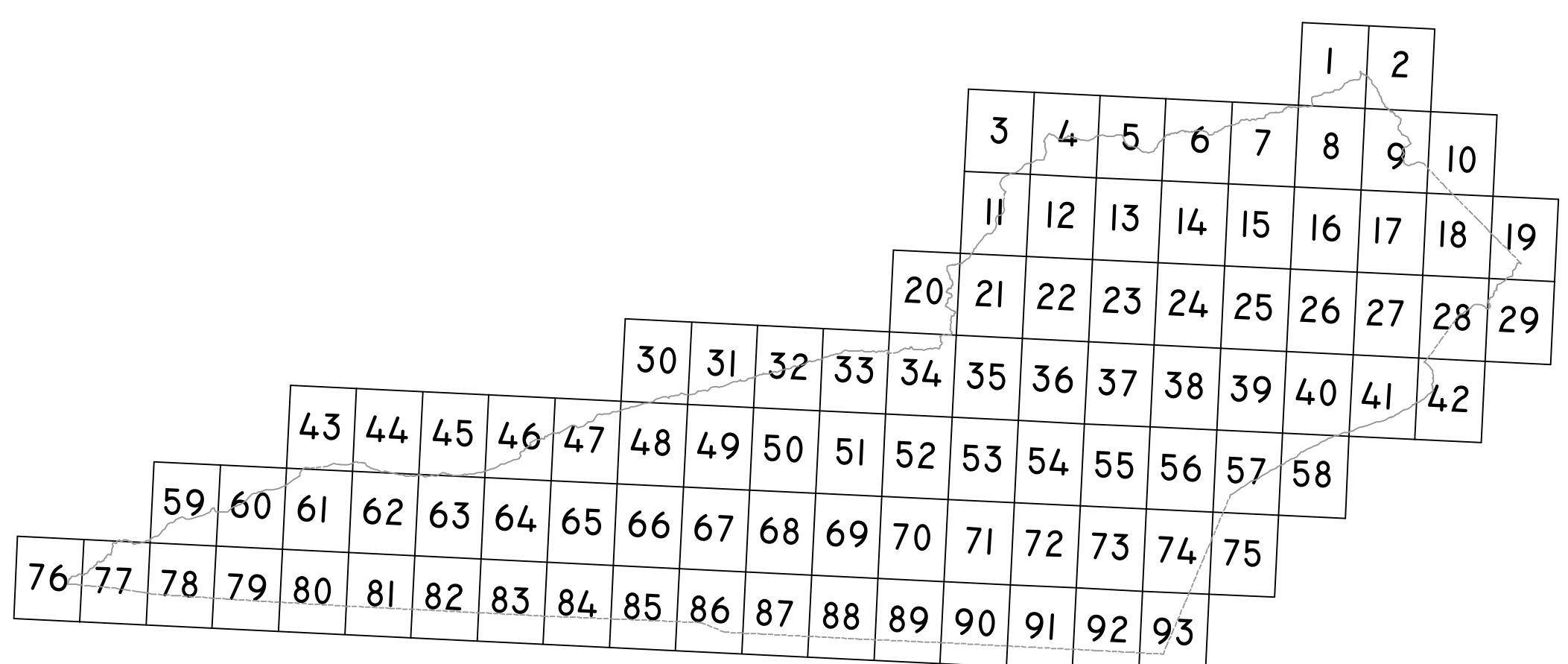
MAGISTERIAL

DISTRICT

SECTION 66
INSERT A

DISCLAIMER:

THE INFORMATION SHOWN HEREON IS NOT BASED ON A CURRENT FIELD SURVEY. IT WAS COMPILED FROM PRIOR COUNTY TAX MAPS, SUBDIVISION PLATS, PARTITION PLATS, AERIAL PHOTOGRAPHY AND OTHER SOURCES. PLEASE NOTIFY THE LEE COUNTY COMMISSIONER OF THE REVENUE OFFICE IF ANY ERRORS OR OMISSIONS OCCUR. LEE COUNTY WILL NOT BE LIABLE FOR ANY DAMAGES, THAT MAY ARISE FROM THE USE OF THIS MAP. PROPERTY LINES AS SHOWN ARE SUBJECT TO A CURRENT FIELD SURVEY BY A CERTIFIED VIRGINIA LAND SURVEYOR. AERIAL IMAGERY ©2011 COMMONWEALTH OF VIRGINIA.



VICINITY MAP: 1" = 5 MILES

